

RAMI EVALUATION SURVEY

RAMI Team

RAMI Workshop 2023

Survey summary Stats

54

Visits

24

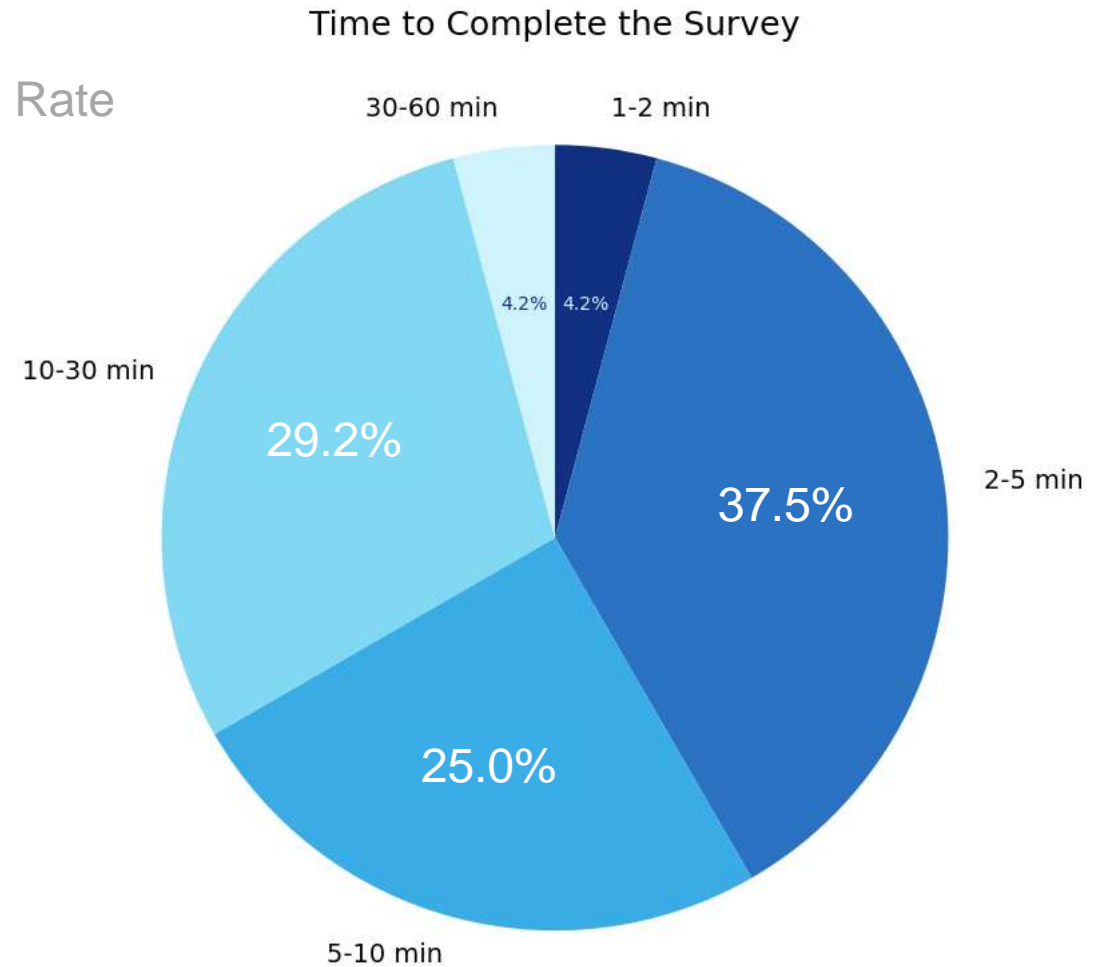
Finished

30

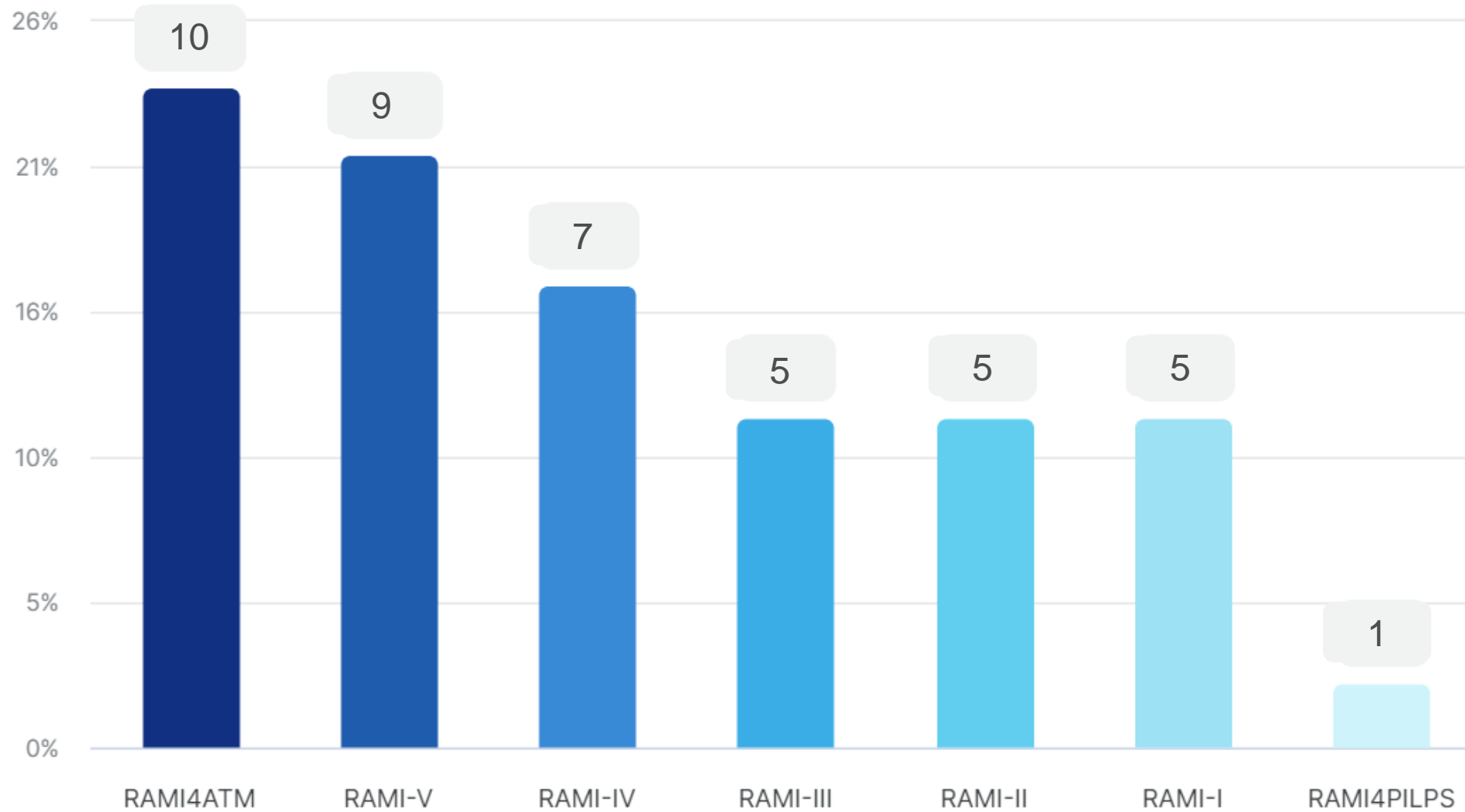
Unfinished

44.4%

Completion Rate

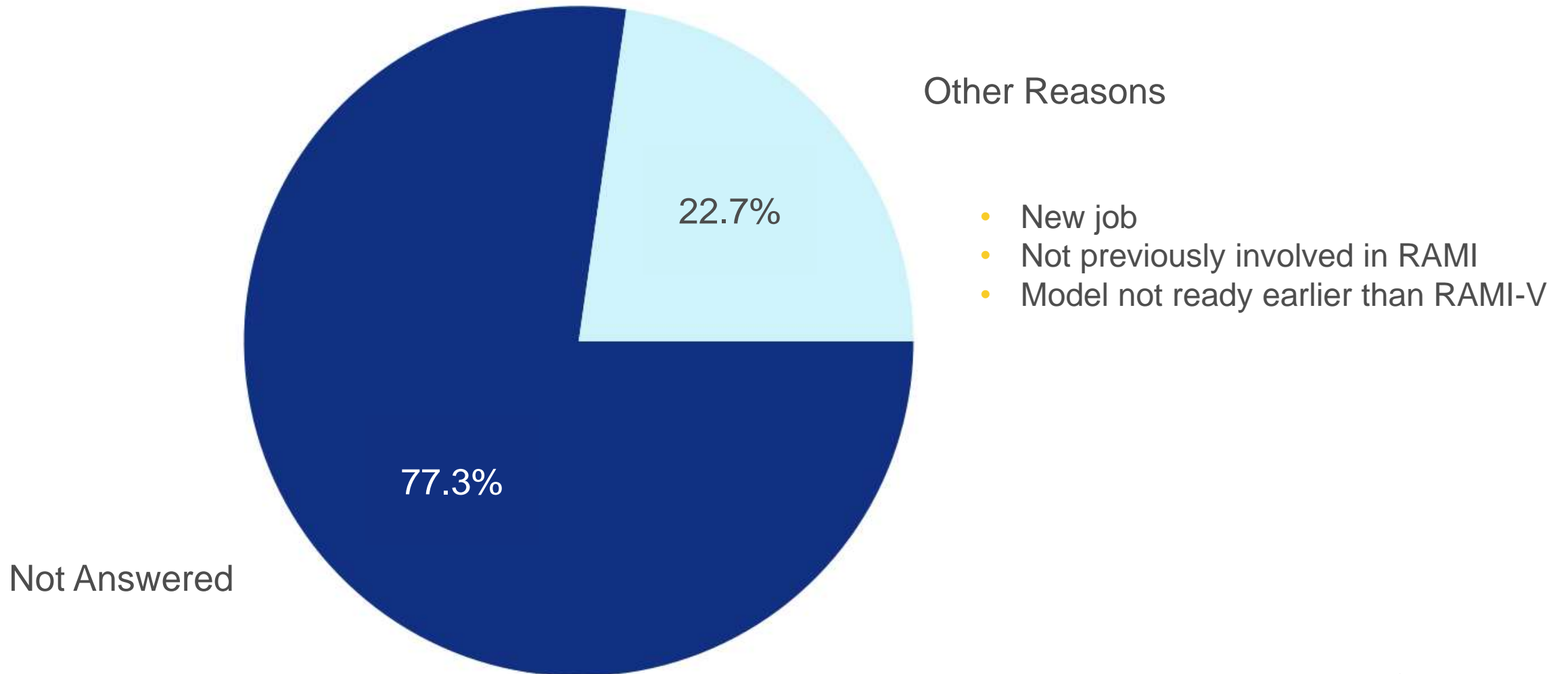


1. Please select the RAMI phases where you participated



2. If you did not participated in any of the RAMI phases, can you please indicate the reason?

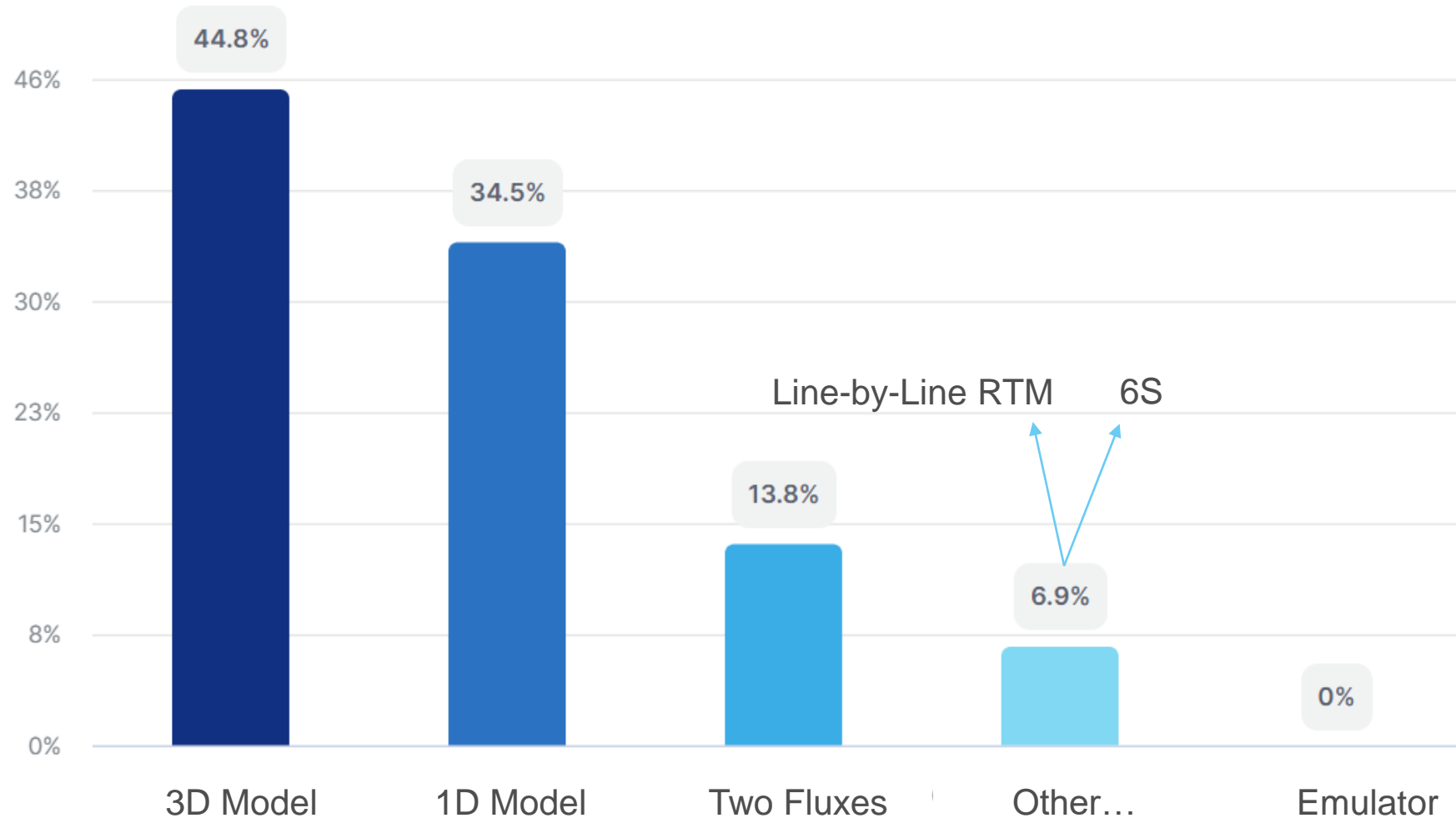
Optional question, 5/22 Answered



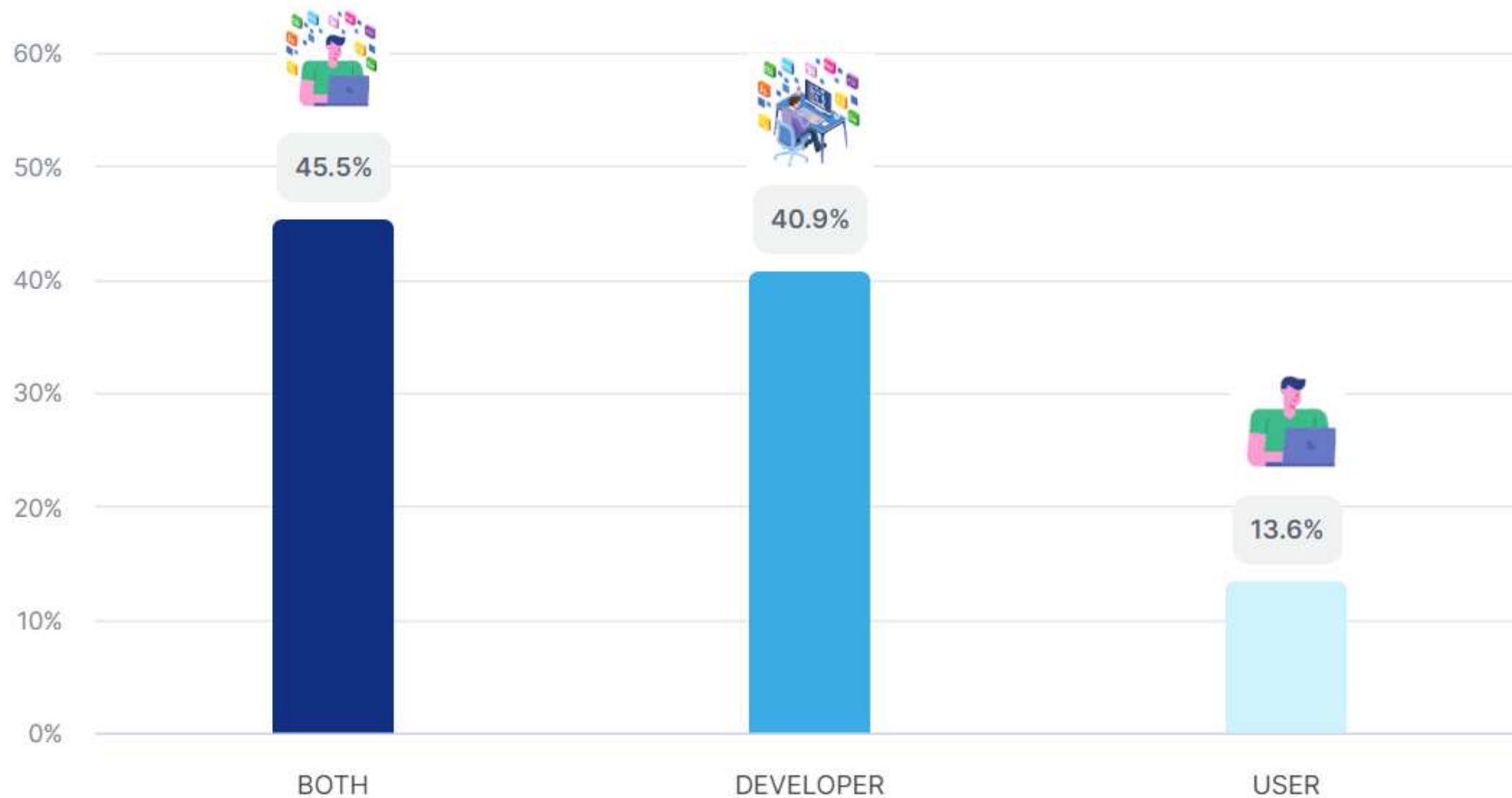
Not Answered

Other Reasons

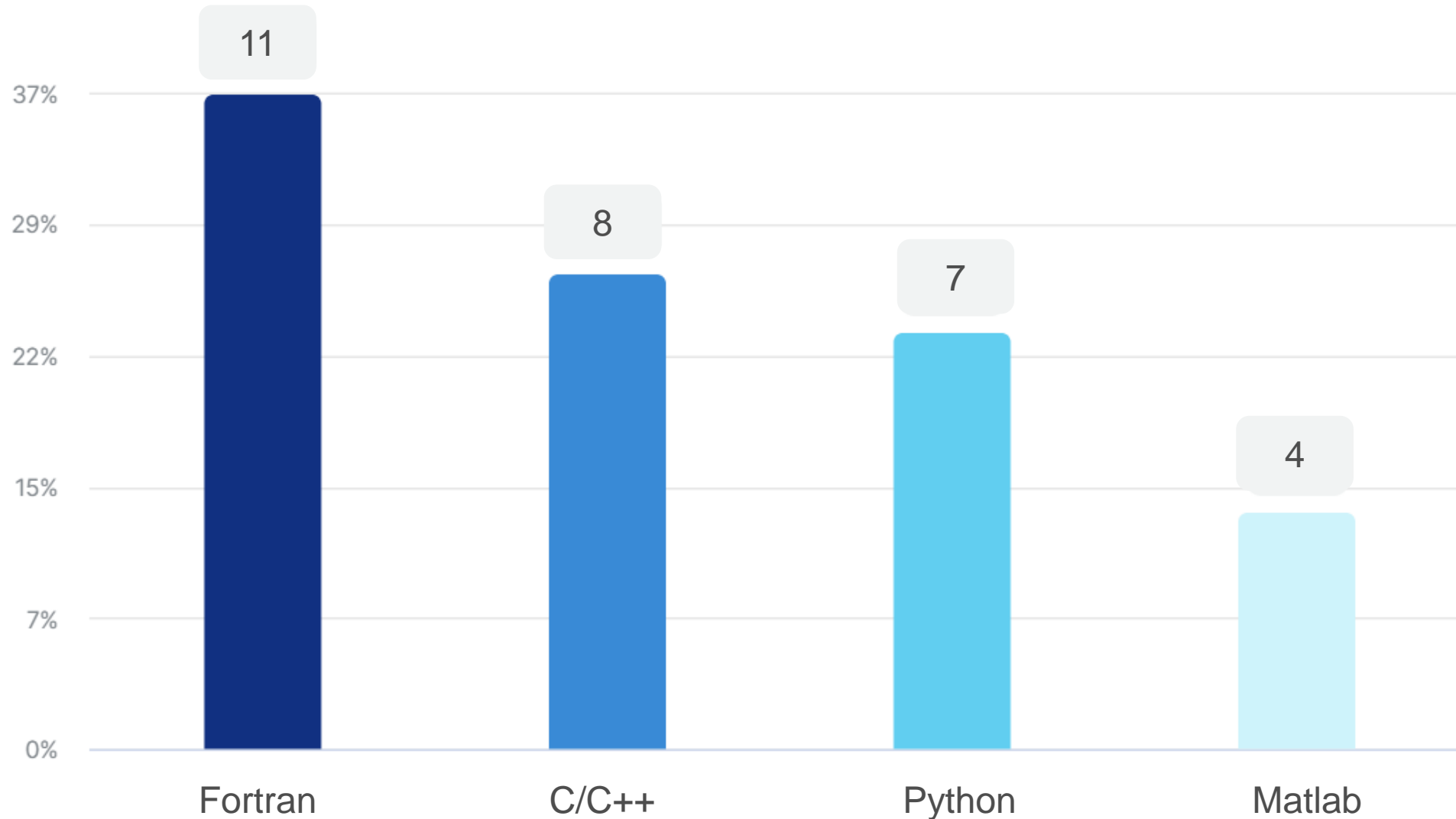
3. Which type of RT Model did you use?



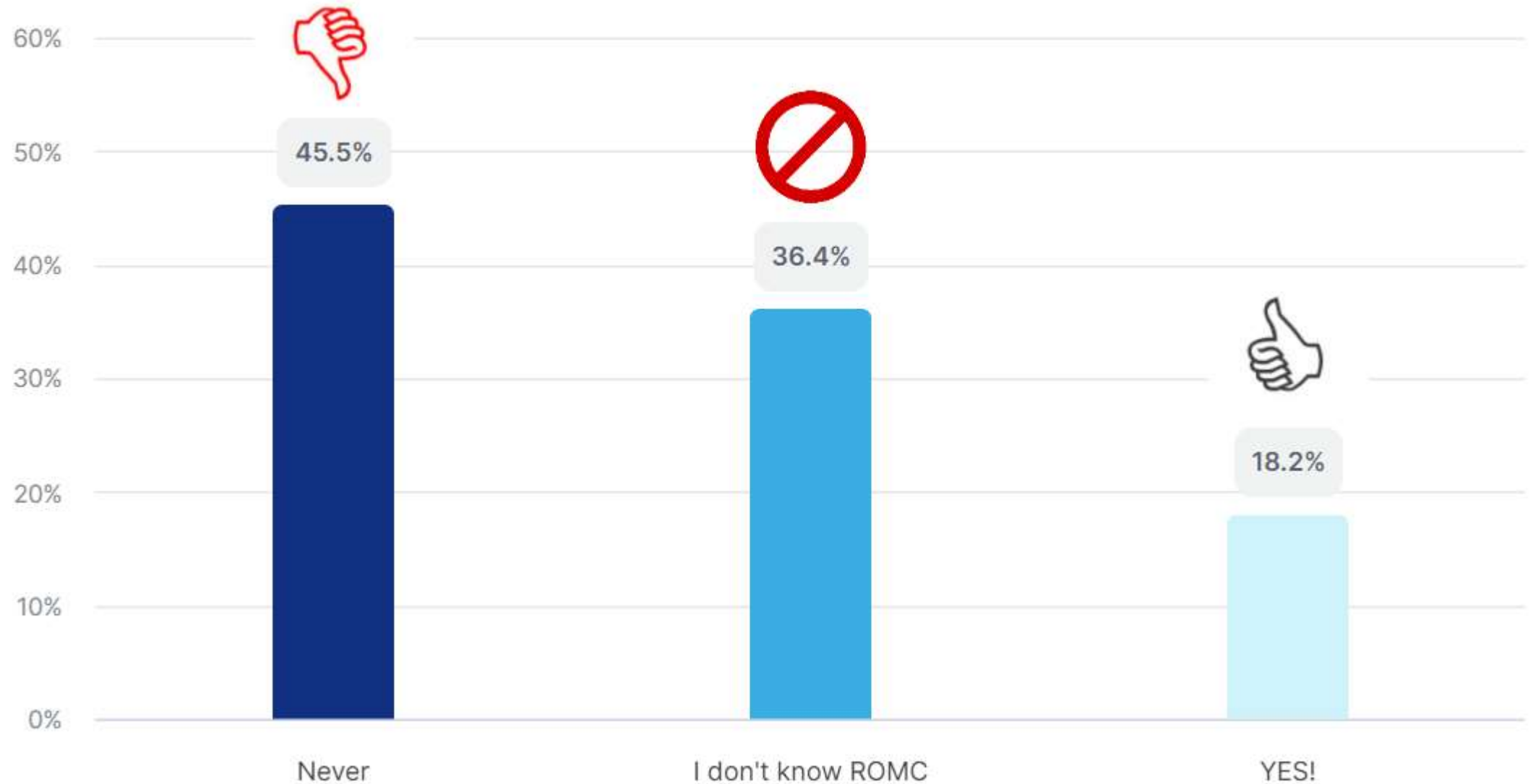
4. Are you a user or a software/model developer?



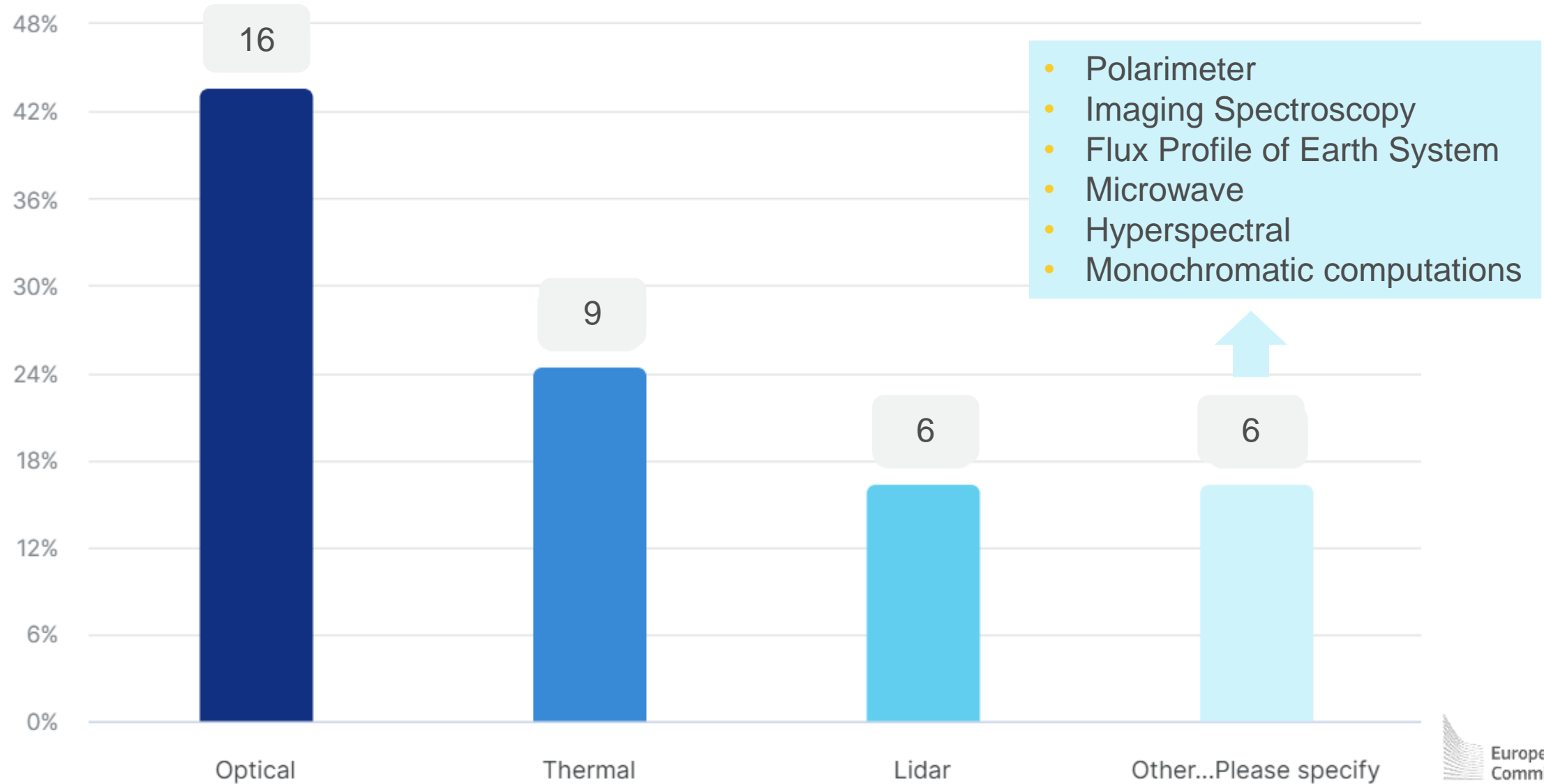
5. Which type of coding language do you use most often?



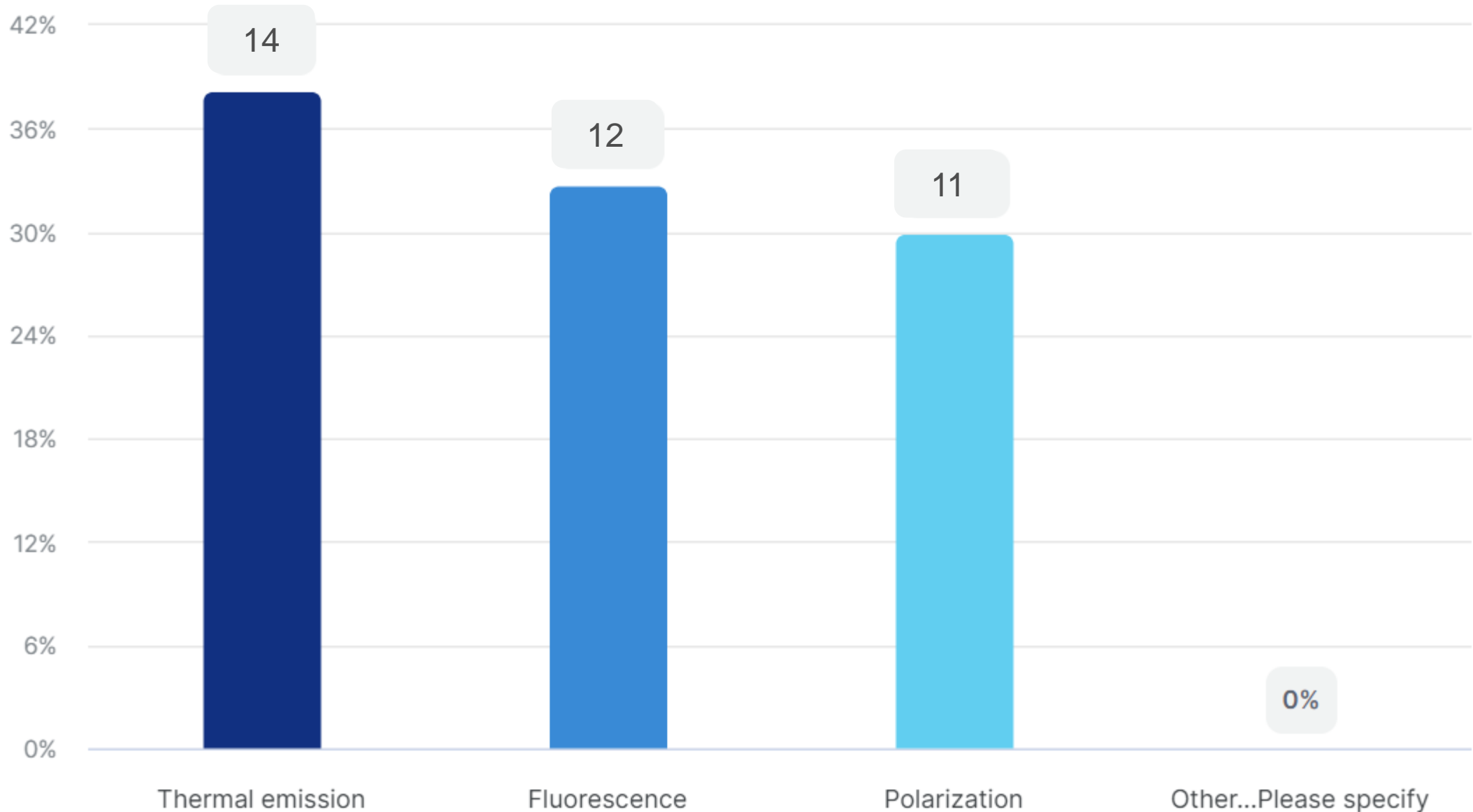
6. Did you ever use ROMC before participating at RAMI?



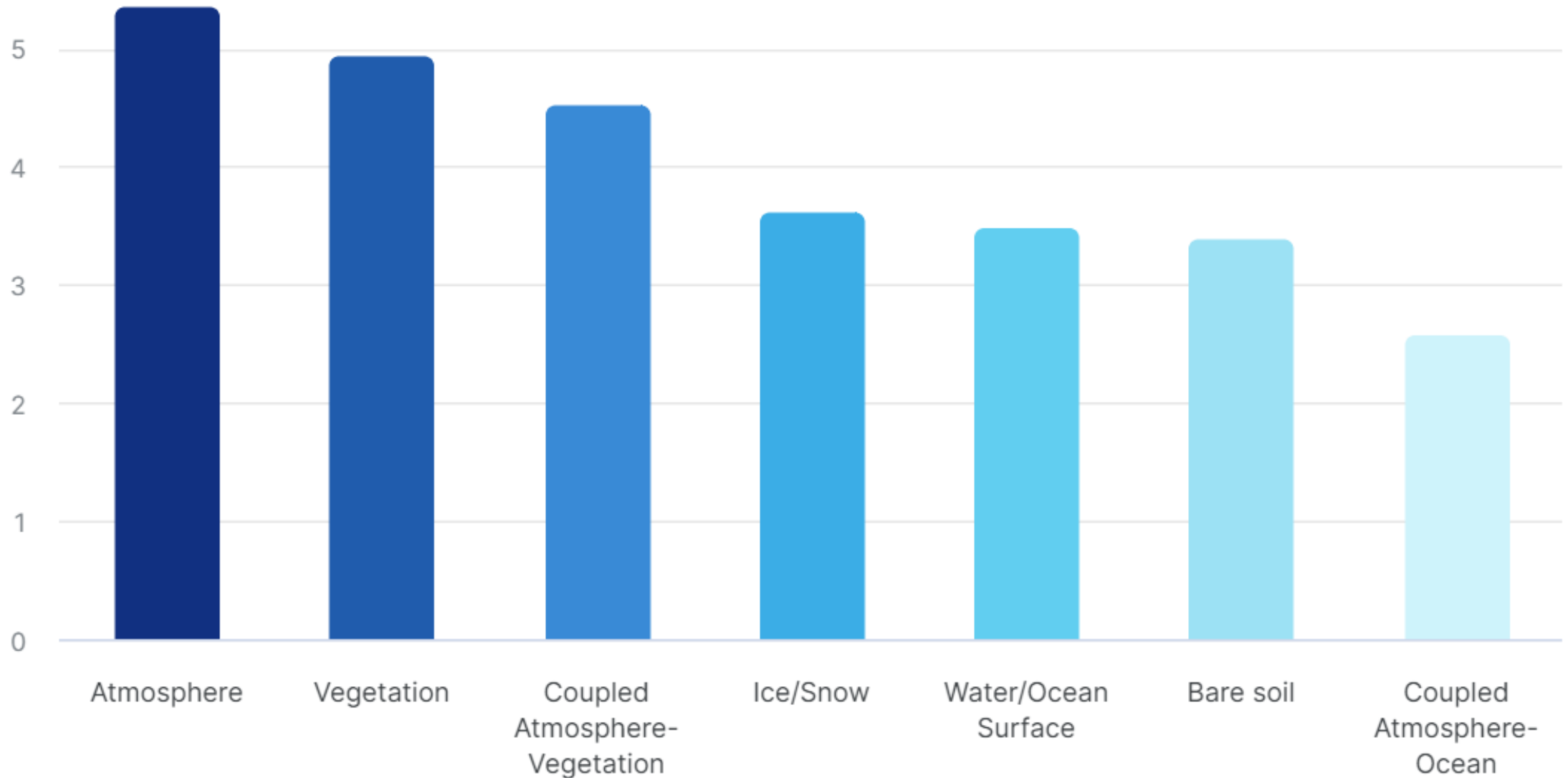
7. Which particular sensor would you like to see in the next RAMI phase?



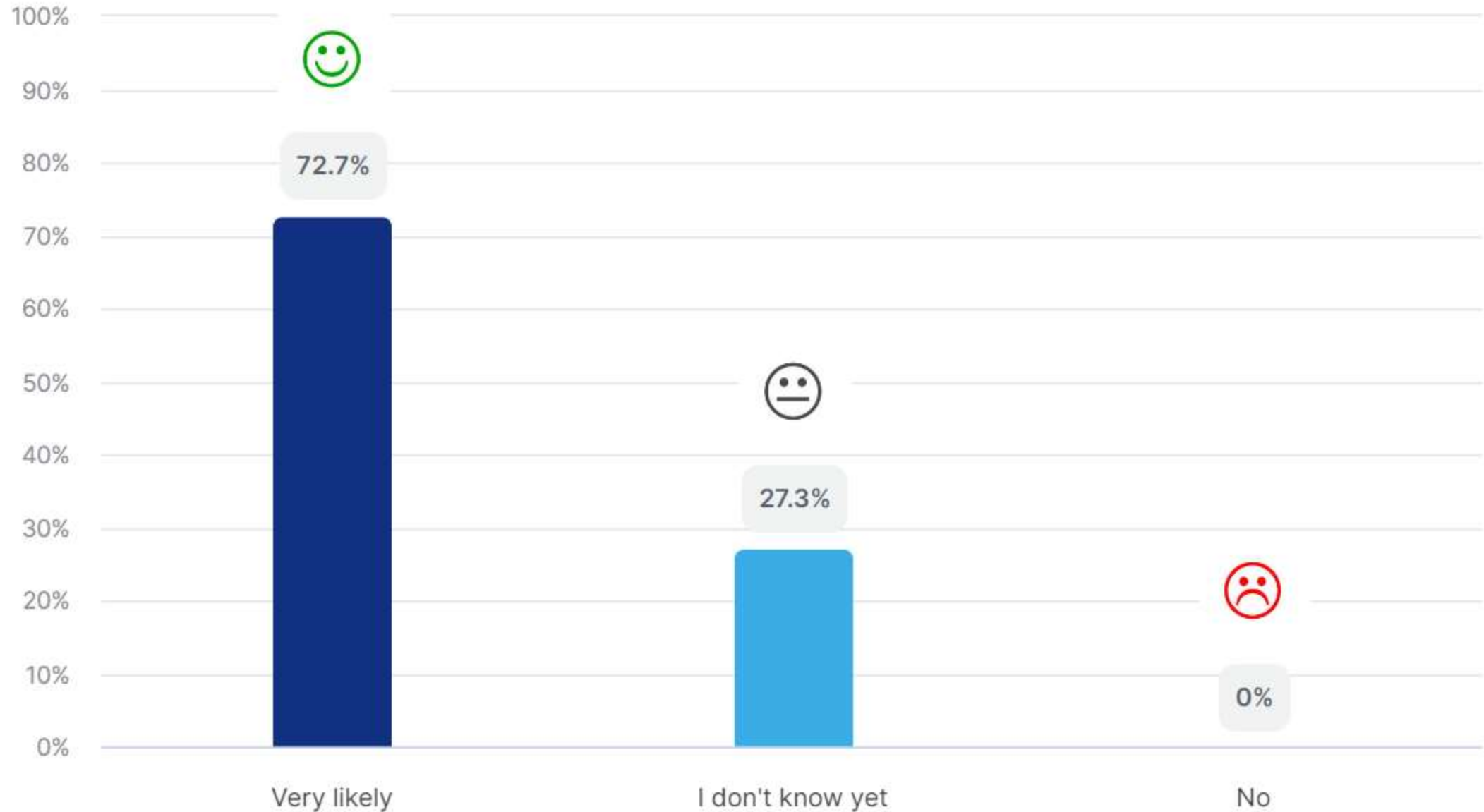
8. Which type of physical process (not implemented at current stage) would you like to see in the next RAMI phase?



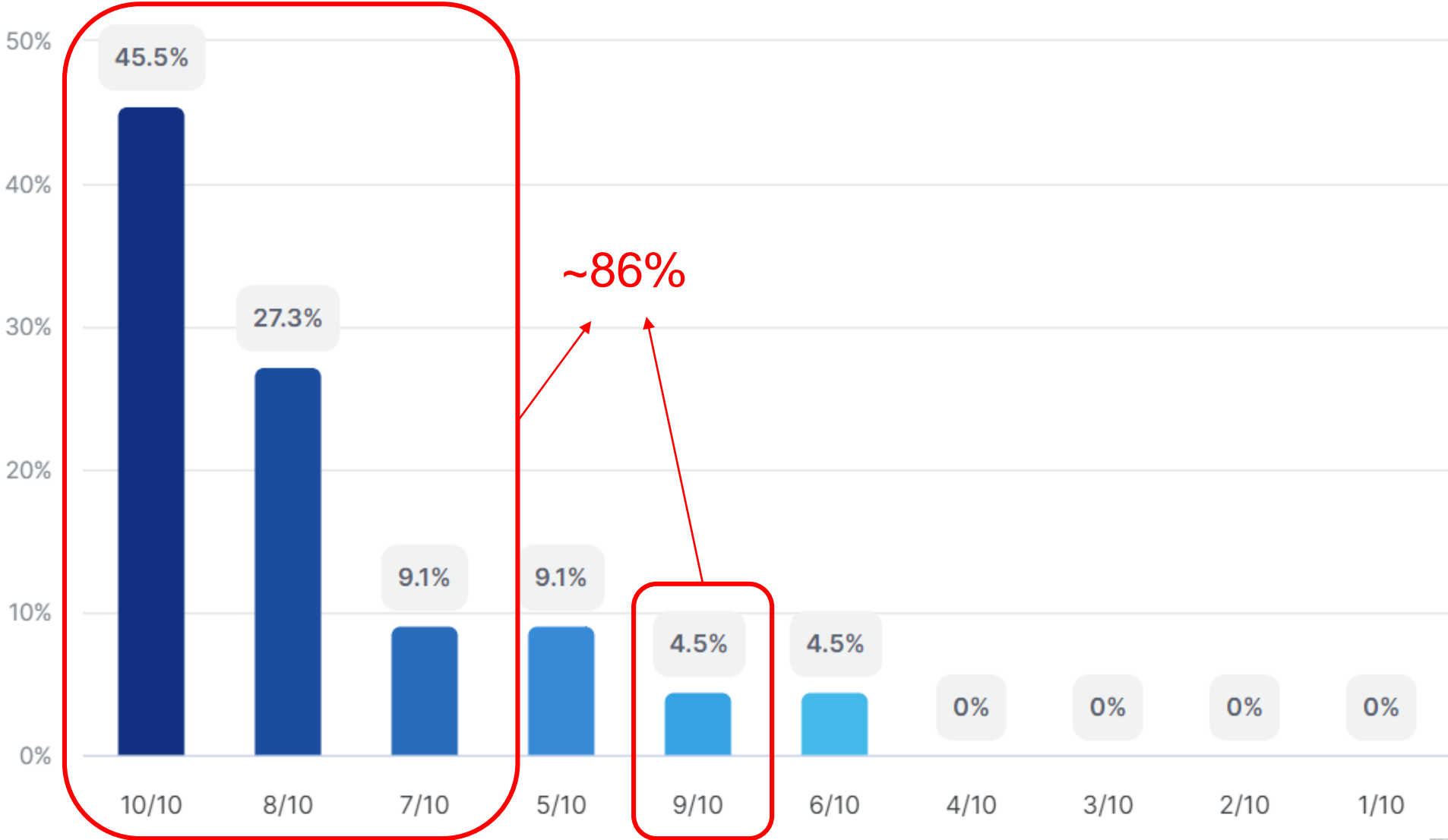
9. Which physical domain would you like to see in the next RAMI phase? (if possible, indicate priority)



10. Are you willing to participate in the (potential) next RAMI phase?



11. How beneficial is RAMI to your research work?

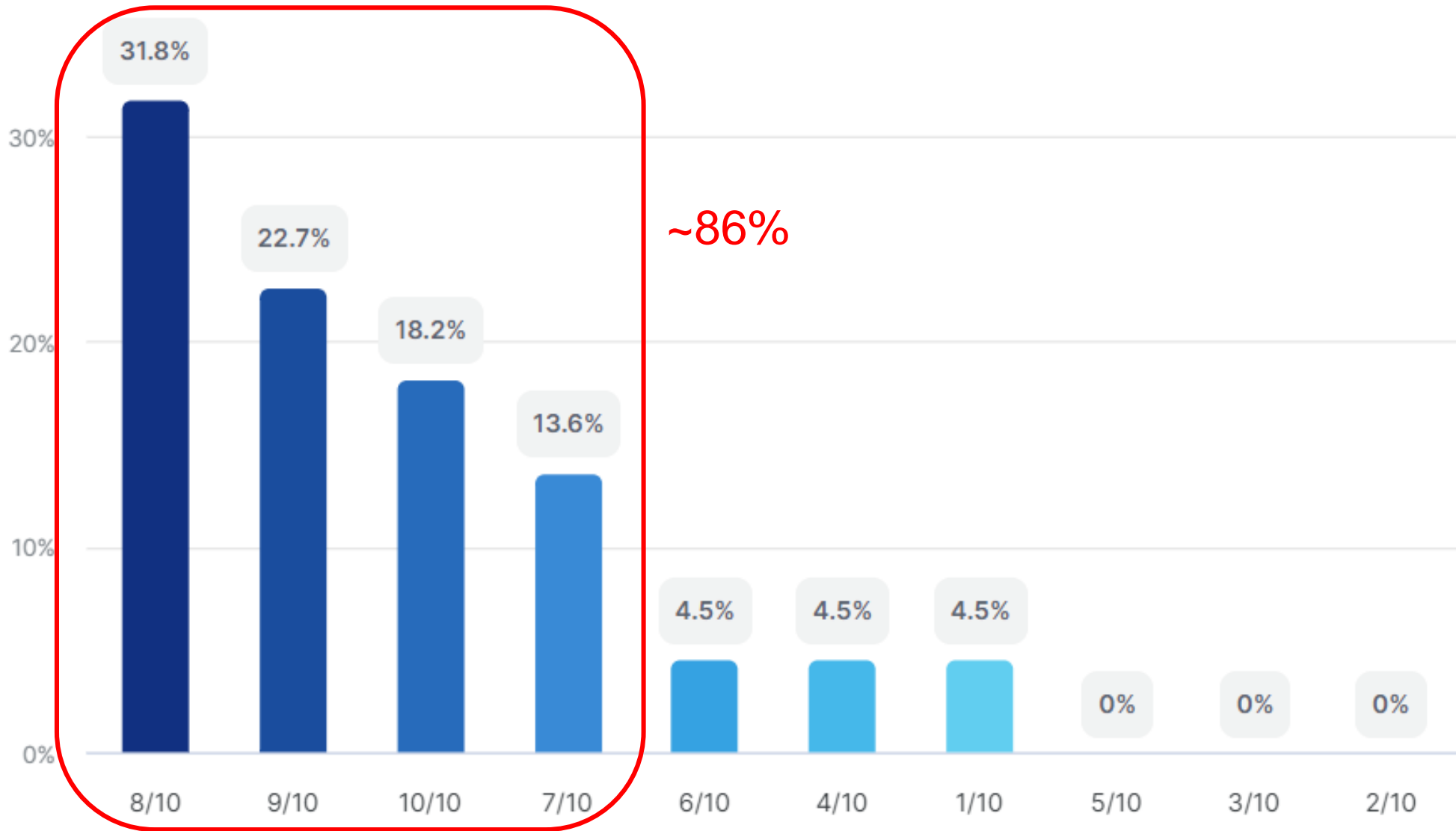


12. What is missing in the current RAMI methodology and quality control with respect to your research work?

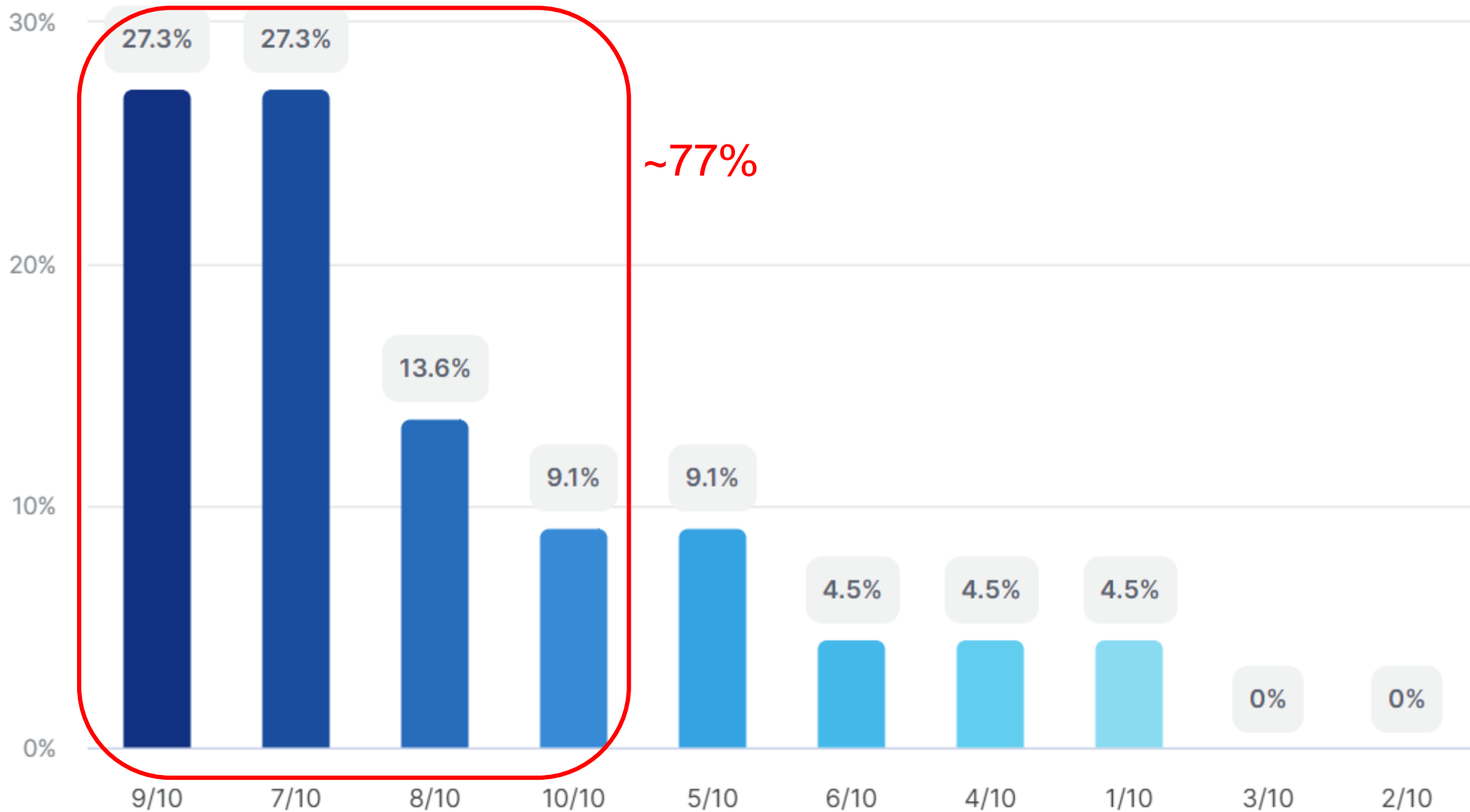
Optional question, 10/24 Answered

MISSING	To be Improved
List of participating models	Webpage and data format not user friendly
Realistic forest canopy	Visibility with respect to space agencies
Fluorescence	Clear timeline for when data will be freely released
Monochromatic computations	Anonymised plots are useless for publication
Hyperspectral data. Atmospheric transfer functions Model comparison via global sensitivity analysis	
Submit results through an API	
ROMC certification	
Urban scenes	
Make data publicly available	

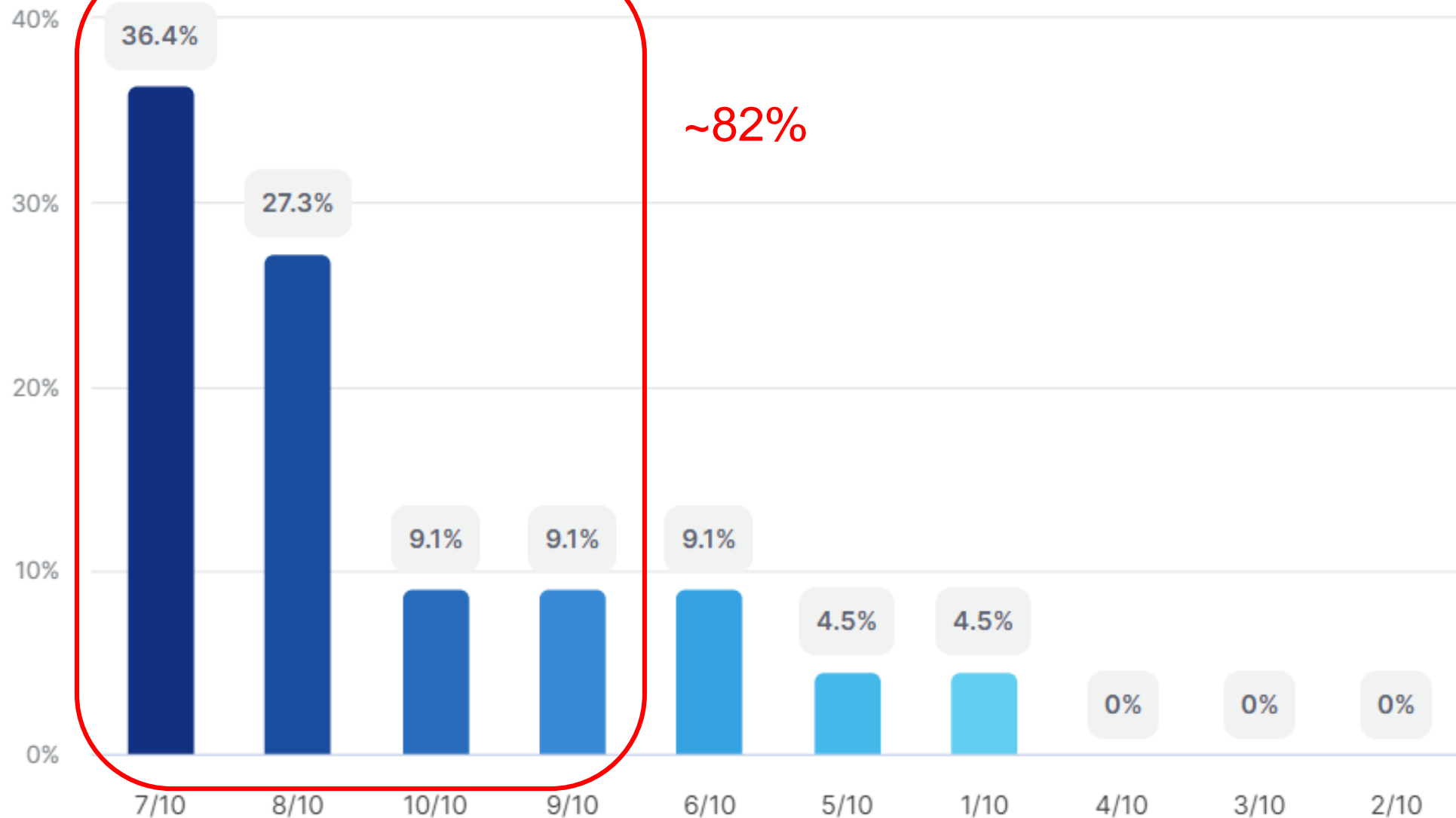
13. How do you rate the information provided for the experiments to be performed?



14. How do you rate the submission process to RAMI-V and RAMI4ATM?

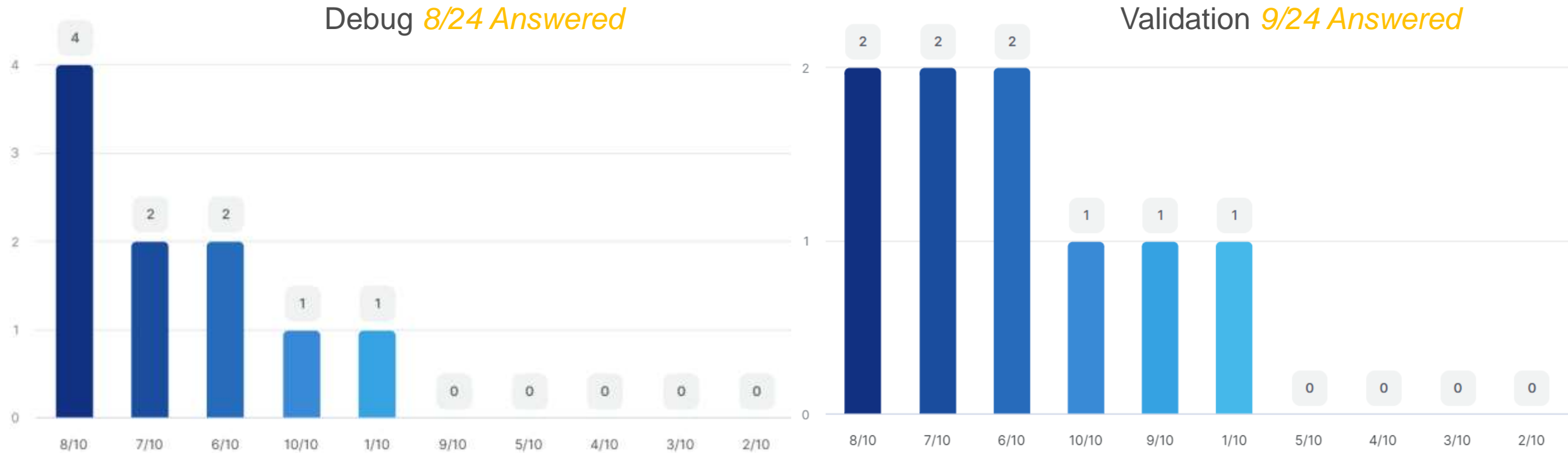


15. In the context of the limitation related to the "blindness concept" of RAMI, how do you rate the information provided in the preliminary results phase?



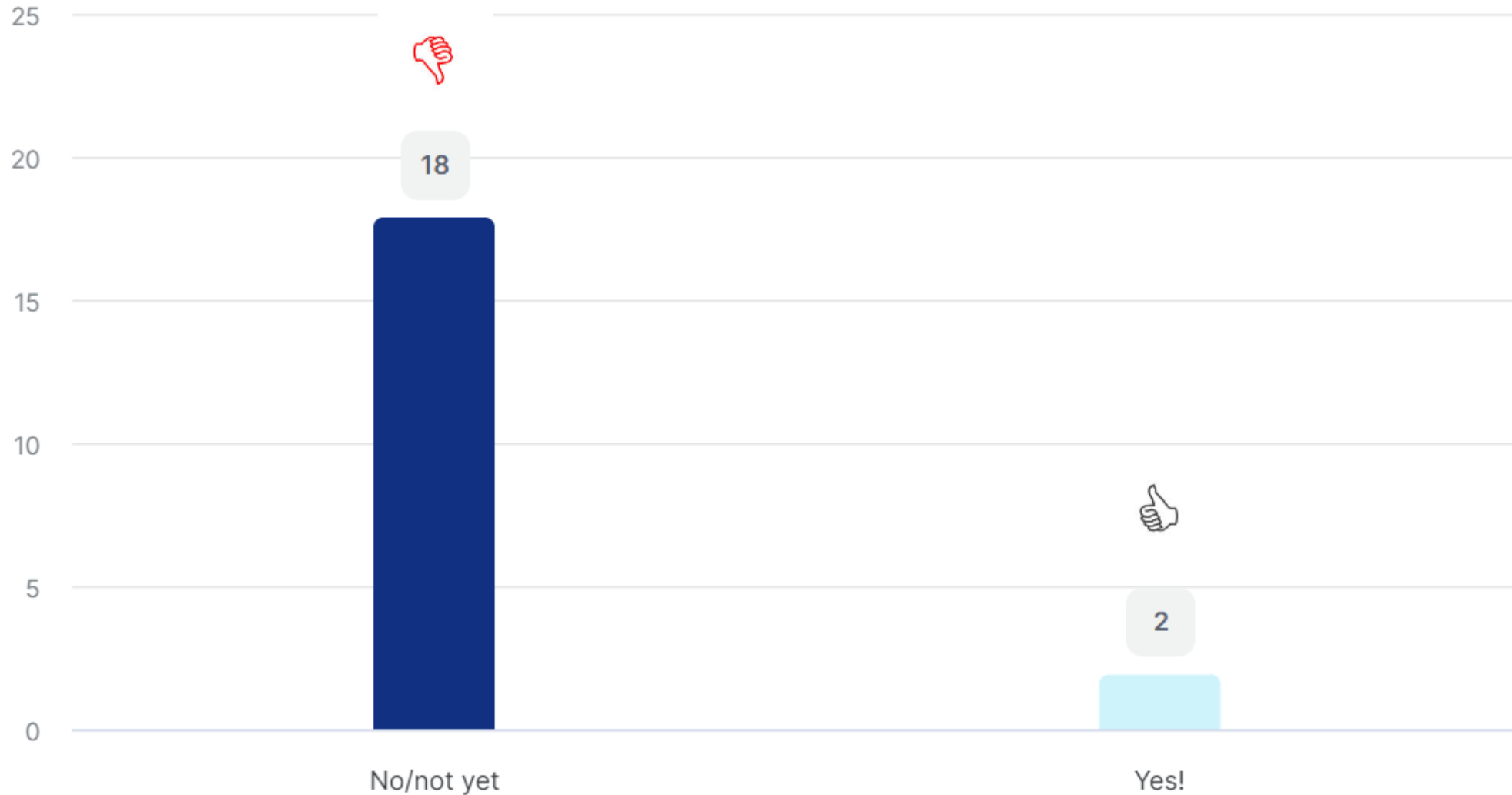
16. How do you rate the submission process to ROMC Debug (Validation) Mode (if you have used it)?

Optional question



18. Have you already used the ROMC Validation Mode Results in your publication?

Optional question 20/24 Answered



Keep in touch



EU Science Hub: ec.europa.eu/jrc



@EU_ScienceHub



EU Science Hub – Joint Research Centre



EU Science, Research and Innovation



Eu Science Hub

Thank you



© European Union 2023

Unless otherwise noted the reuse of this presentation is authorised under the [CC BY 4.0](https://creativecommons.org/licenses/by/4.0/) license. For any use or reproduction of elements that are not owned by the EU, permission may need to be sought directly from the respective right holders.